

AMORIM SOLUTIONS

IMPACT INSULATION/ISOLATION AUX BRUITS D'IMPACT

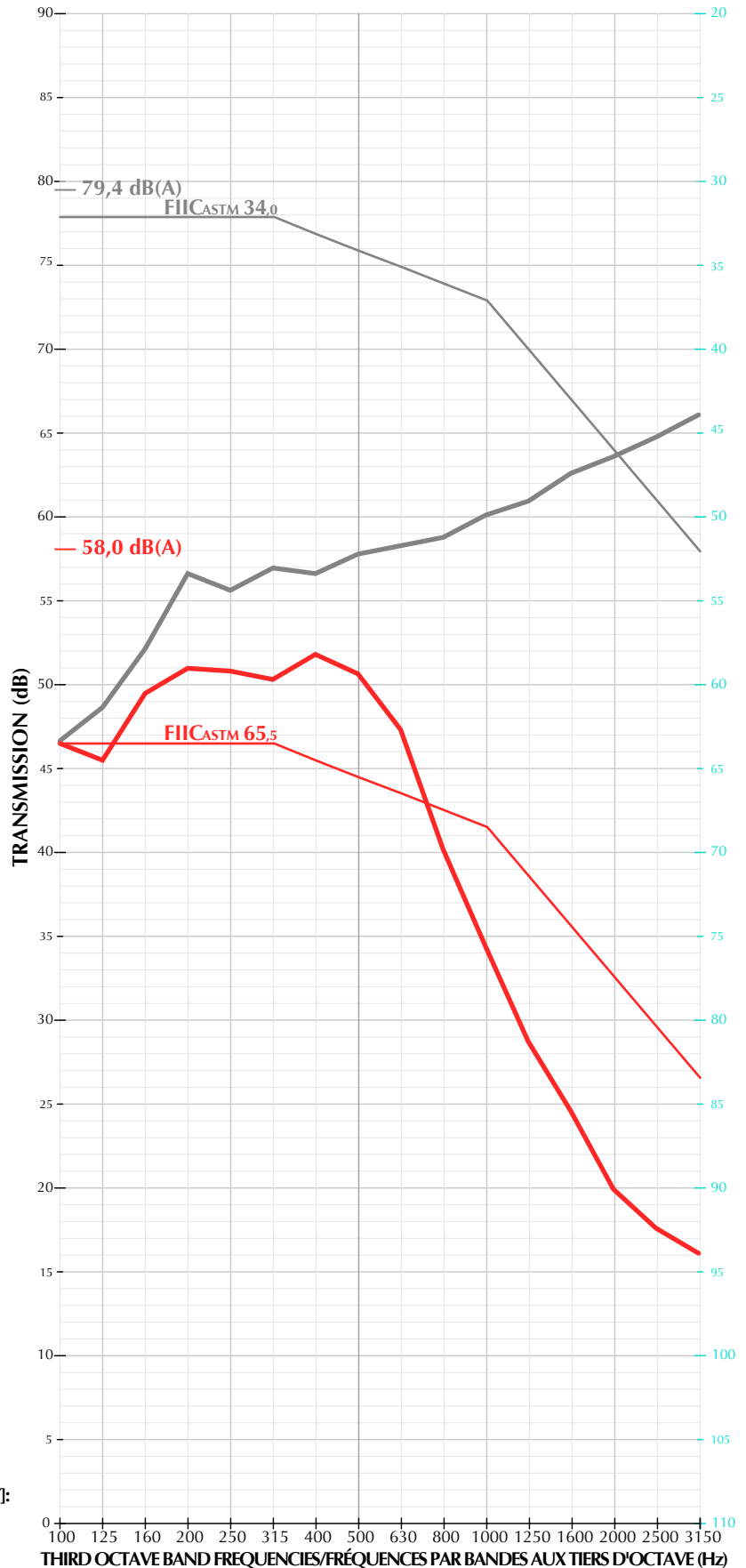
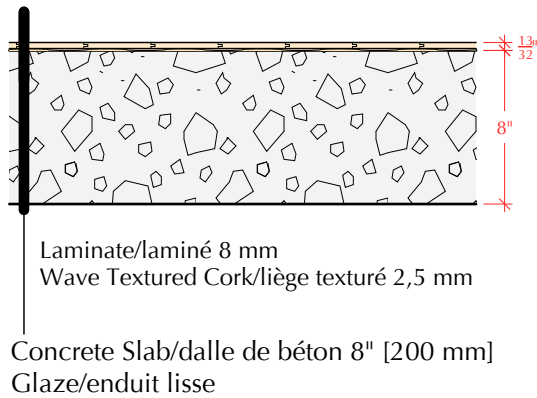
21 JUNE/JUIN 2007

MEASUREMENT CONDITIONS/CONDITIONS DE MESURES [417]:

Closed Space/local fermé
Painted Walls/murs peints
Concrete Floor/plancher au béton
Volume = 1087 cu.ft. [30,77 m³]

ASTM E 1007-97 — Standard Test Method for Field Measurement of Tapping Machine Impact Sound Transmission Through Floor-Ceiling Assemblies and Associated Support Structures
ASTM E 989-89 (Reapproved 1994) — Standard Classification for Determination of Impact Insulation Class (IIC)

Floor/Ceiling common surface = 279 sq.ft.
Surface du plancher/plafond commun = 25,9 m²



417 TO/VERS 317

FII _{CASTM}	dB(A)	$\sum \Delta$	n Δ	Δ_{max}
65	58,0	31,5	7	6,3

417 TO/VERS 317 (CONCRETE/BÉTON)

FII _{CASTM}	dB(A)	$\sum \Delta$	n Δ	Δ_{max}
34	79,4	11,8	2	8,0

MEASUREMENT CONDITIONS/CONDITIONS DE MESURES [317]:

Closed Space/local fermé
Painted Walls/murs peints
Concrete Floor/plancher au béton
Volume = 1087 cu.ft. [30,77 m³]