

# AcustiCORK™ AC55 Plus

## High Performance Sound Control Underlayment

## INSTALLATION INSTRUCTIONS Nailed Hardwood Flooring on a Concrete Slab Subfloor

The following installation instructions are a recommendation, but are not intended as a definitive project specification. They are presented in an attempt to be used with recommended installation procedures as published by the National Oak Flooring Manufacturers Association (NOFMA) and the National Wood Flooring Association (NWFA).

### **SUBFLOOR**

1. All subfloor work should be in accordance with the recommended procedures as published by NOFMA and the NWFA.
2. Concrete subfloor should be level, properly sloped and structurally sound.
3. Inspect concrete subfloor for any open cracks and fill with a high-grade epoxy filler.
4. Remove any excess concrete lumps or residue that may interfere with the installation of the AcustiCORK AC 55 Plus underlayment.

### **TESTING FOR MOISTURE**

1. Test the subfloor for excessive moisture prior to the installation of the AcustiCORK AC55 Plus.
2. If excessive moisture is present (normally >3 lbs. per 1000 s/f in 24hrs) in the subfloor, a vapor-retarding barrier must be installed to correct the problem. Consult the project architect or flooring manufacturer for details.

### **VAPOR RETARDING BARRIER**

1. Consult the most recent NOFMA & NWFA Installation Manuals for methods and materials associated with the use of vapor retarding barriers.

### **PERIMETER ISOLATION STRIP**

1. Install the precut 3" wide, 6mm thick perimeter isolation barrier vertically around the perimeter of the entire floor including any openings or protrusions such as electrical boxes, heating ducts, cold air returns, columns or pipes in the subfloor installation. The perimeter isolation strip **MUST be installed prior** to AcustiCORK AC55 Plus underlayment being installed.
2. Starting from one end of the room, unroll the 3" isolation barrier material and place flat against the wall and flush to the floor.
3. After positioning, tape or staple (very close to the top edge) the isolation barrier firmly into place at all wall and vertical partitions surrounding the perimeter. Never permanently mechanically fasten

the isolation barrier, as this will severely diminish the acoustical performance of the entire sound rated floor system.

4. After the floor is installed trim the isolation barrier flush with the surface of the finished floor, removing any staples or mechanical fasteners that were used to temporarily hold it in place.

### **ACOUSTICORK AC55 PLUS UNDERLAYMENT for NAILED DOWN HARDWOOD FLOORS**

1. Set the 1/2" thick sheets in place starting in a corner of the room, butting the sheets tightly against the perimeter isolation barrier already installed.
2. Proceed to cover the entire room, making sure the sheets are tightly butted together, without gaps. Tape the joints with duct or fiberglass mesh tape. For this type of installation it is not recommended that the sheets be glued to the subfloor. **Never mechanically fasten the sheets to the subfloor, as this will severely diminish the acoustical value of the product.**
3. After completion, the AcustiCORK AC55 Plus sheets should cover the entire floor area without gaps and with the joints securely taped.

### **PLYWOOD SUBFLOOR (Nailing Bed)**

1. Consult the most recent NOFMA or NWFA Installation Manuals for materials and methods associated with the installation of a plywood subfloor, as is commonly used with a Nailed Down Hardwood Floor applied over a radiant heated floor system. *Generally, two layers of 3/8" or 1/2" plywood are loose laid on the AcustiCORK material and cross-lapped, either perpendicularly or on the diagonal, leaving a 1/4" gap at the joints. The two layers are fastened and/or adhered together using a fastener that is long enough to penetrate both layers of plywood, but not penetrate the AcustiCORK.*

### **NAILED DOWN WOOD FLOOR INSTALLATION**

1. Follow manufacturers recommended instructions for the finished floor, including any membrane as required by the manufacturer.
2. Never drive a mechanical fastening device through the plywood nailing bed and AcustiCORK and into the subfloor. This will severely diminish the acoustical value of the system.
3. If a baseboard or shoe molding detail is required leave a minimum 1/8" gap between the finished floor and the bottom of the baseboard or shoe. This gap must be filled with a non-hardening, color matching or clear Acoustical Grade Sealant.

## AcustiCORK™ PRODUCTS

### Sound Control Underlayment & Crack Suppression Membrane

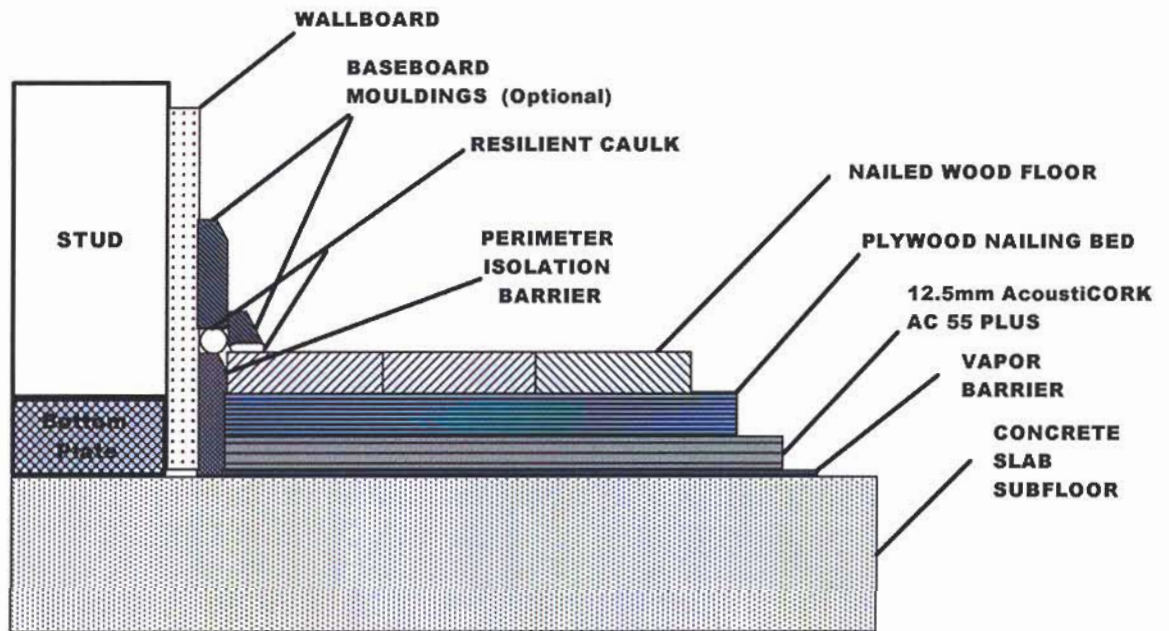
26112 110th Street • PO Box 25 • Trevor, WI 53179 • 1-800-255-2675 • 1-262-862-2311 • FAX 1-262-862-2500

Visit our Website at [www.acousticorkusa.com](http://www.acousticorkusa.com) for the most complete information on AcustiCORK™

# AcoustiCORK™ AC55 Plus

High Performance Sound Control Underlayment

INSTALLATION INSTRUCTIONS  
Nailed Hardwood Flooring on a  
Concrete Slab Subfloor



## AcoustiCORK™ PRODUCTS

Sound Control Underlayment & Crack Suppression Membrane

26112 110th Street • PO Box 25 • Trevor, WI 53179 • 1-800-255-2675 • 1-262-862-2311 • FAX 1-262-862-2500

Visit our Website at [www.acousticorkusa.com](http://www.acousticorkusa.com) for the most complete information on AcoustiCORK™