

AcustiCORK™ AC55 Plus

High Performance Sound Control Underlayment

INSTALLATION INSTRUCTIONS Tile Floors over 1/2" C.B.U.'s on a Concrete Slab Subfloor

The following installation instructions are a recommendation, but are not intended as a definitive project specification. They are presented in an attempt to be used with recommended installation procedures, as published by the Tile Council of America and as specified in the American National Standards Institute.

SUBFLOOR

1. All subfloor work should be in accordance with the recommended procedures as published by the Tile Council of America and the American National Standards Institute (ANSI).
2. Concrete subfloor should be level, properly sloped and structurally sound.
3. Inspect concrete subfloor for any open cracks and fill with a high-grade epoxy filler.
4. Remove any excess concrete lumps or residue that may interfere with the installation of the AcustiCORK AC 55 Plus underlayment.

PERIMETER ISOLATION STRIP

1. Install the precut 3" wide, 6mm thick perimeter isolation barrier vertically around the perimeter of the entire floor including any openings or protrusions such as electrical boxes, heating ducts, cold air returns, columns or pipes in the subfloor installation. **The perimeter isolation strip MUST be installed prior to AcustiCORK AC55 Plus underlayment being installed.**
1. Starting from one end of the room, unroll the 3" isolation barrier material and place flat against the wall and flush to the floor.
2. After positioning, tape or staple (very close to the top edge) the isolation barrier firmly into place at all wall and vertical partitions surrounding the perimeter.
3. Never permanently mechanically fasten the isolation barrier, as this will severely diminish the acoustical performance of the entire sound rated floor system.
4. After the floor is installed, trim the isolation barrier flush with the surface of the finished floor, removing any staples or mechanical fasteners that were used to temporarily hold it in place.

ACOUSTICORK AC55 PLUS UNDERLAYMENT

1. Set the 1/2" thick sheets in place starting in a corner of the room, butting the sheets tightly against the perimeter isolation barrier already installed.
2. Proceed to cover the entire room, making sure the sheets are tightly butted together, without gaps. Tape the joints with duct or fiberglass mesh tape. For this

type of installation it is not recommended that the sheets be glued to the subfloor. **Never mechanically fasten the sheets to the subfloor, as this will severely diminish the acoustical value of the product.**

3. After completion, the AcustiCORK AC55 Plus sheets should cover the entire floor area without gaps and with the joints securely taped.

CEMENTITIOUS BACKER UNITS "CBU'S"

1. Install the CBU's perpendicular directly on top of the AcustiCORK AC55 Plus, allowing a 1/4" gap between the units. CBU joints should not align with joints in the AcustiCORK AC55 Plus panels installed.
2. With the CBU's gapped, apply 2" high strength fiberglass tape to the bottom of the CBU's, so as to join the CBU's together.
3. Fill the gapped joint between the two CBU's with latex modified Portland cement thin-set mortar to the top of the gapped joint.
4. Apply another 2" strip of high strength fiberglass mesh tape over the joint, making sure that a ridge does not form due to excess cement mortar.
5. Flat trowel a thin coat of the same mortar over the taped joint, to ensure a smooth surface for the installation of the tile flooring.
6. At the place where the corners of the CBU's meet, place a heavy object, such as a box of tile, over the corners, as necessary to ensure a level surface.
7. **Allow a minimum of 48 hours for the CBU system to cure prior to any foot traffic exposure.** This is essential for structurally sound system.

CERAMIC TILE INSTALLATION

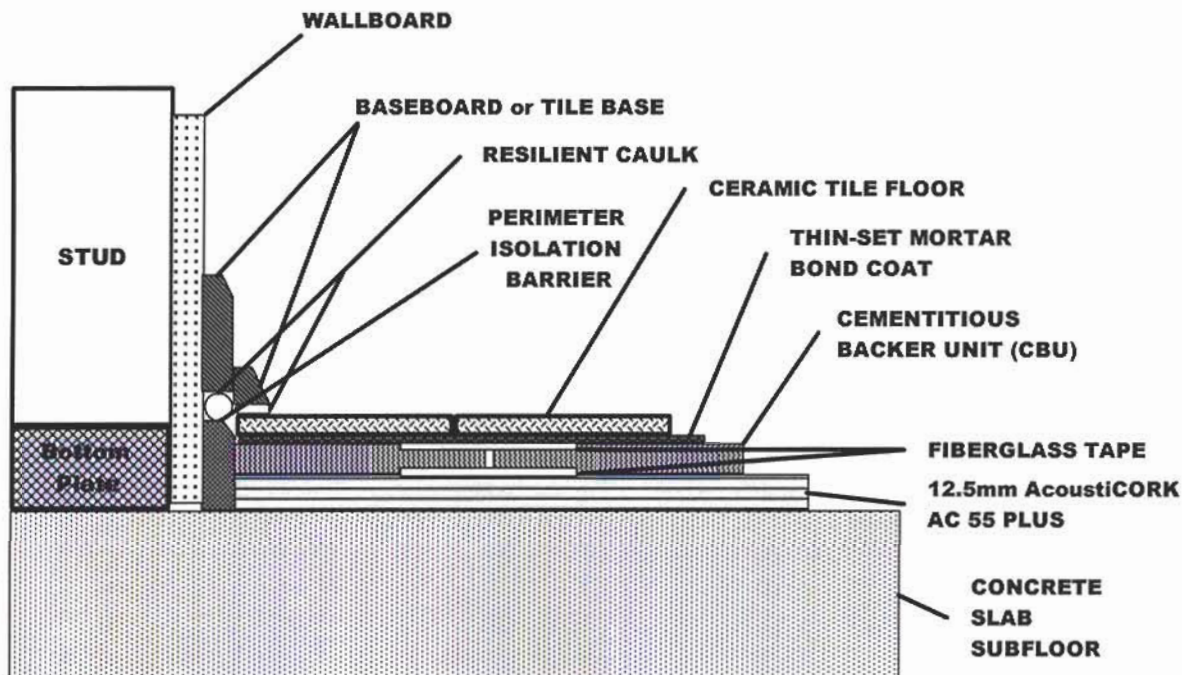
1. Follow manufacturers recommended instructions for the installation of the finished floor tile conforming to ANSI A108.1 A, B, C and A108.5, depending on the method of installation.
2. After the tile is installed and grouted, visually inspect and remove, where necessary, any excess mortar or grout that is in contact with the walls or any vertical partitions. Failure to do so may greatly diminish the acoustical value of the system.
3. Trim the perimeter isolation barrier flush or below the surface of the finished floor and caulk the joint with a non-hardening acoustical sealant.
4. If a baseboard or tile base is to be used, leave a minimum 1/8" gap between the finished floor and the bottom of the baseboard or tile base. **Do not grout this joint.** This gap must be filled with a non-hardening, color matching or clear Acoustical Grade Sealant.

AcustiCORK™ PRODUCTS

Sound Control Underlayment & Crack Suppression Membrane

26112 110th Street • PO Box 25 • Trevor, WI 53179 • 1-800-255-2675 • 1-262-862-2311 • FAX 1-262-862-2500

Visit our Website at www.acusticorkusa.com for the most complete information on AcustiCORK™



AcoustiCORK™ PRODUCTS

Sound Control Underlayment & Crack Suppression Membrane

26112 110th Street • PO Box 25 • Trevor, WI 53179 • 1-800-255-2675 • 1-262-862-2311 • FAX 1-262-862-2500

Visit our Website at www.acousticorkusa.com for the most complete information on AcoustiCORK™